

The logo for NORMAC, featuring the word "NORMAC" in a bold, black, sans-serif font with a red outline, set against a white rectangular background with a grey border.

**NORMAC**

# Normac U-Repair

Conveyor Belt Repair Quick Start Guide

## U-Repair System



## U-Repair System

- **100% Solids Elastomeric Cartridge System.**
- **A rapid and permanent flexible repair.**
- **Hardens to touch in two minutes.**
- **Can be buffed in 30 minutes.**
- **No V.O.C's. No shrinkage.**
- **Maximum hardness of 60 shore A.**
- **Can be hand extruded or spray applied.**
- **Uses include – Repairs to belts, lagging and lining.**
- **Applications where joint sealing is needed.**

Solvent clean the repair area.



Buff the repair area.



Apply the NR-8400/8401 primer.



Remove seal cap.



Screw on static mixer.





Insert cartridge into applicator tool.



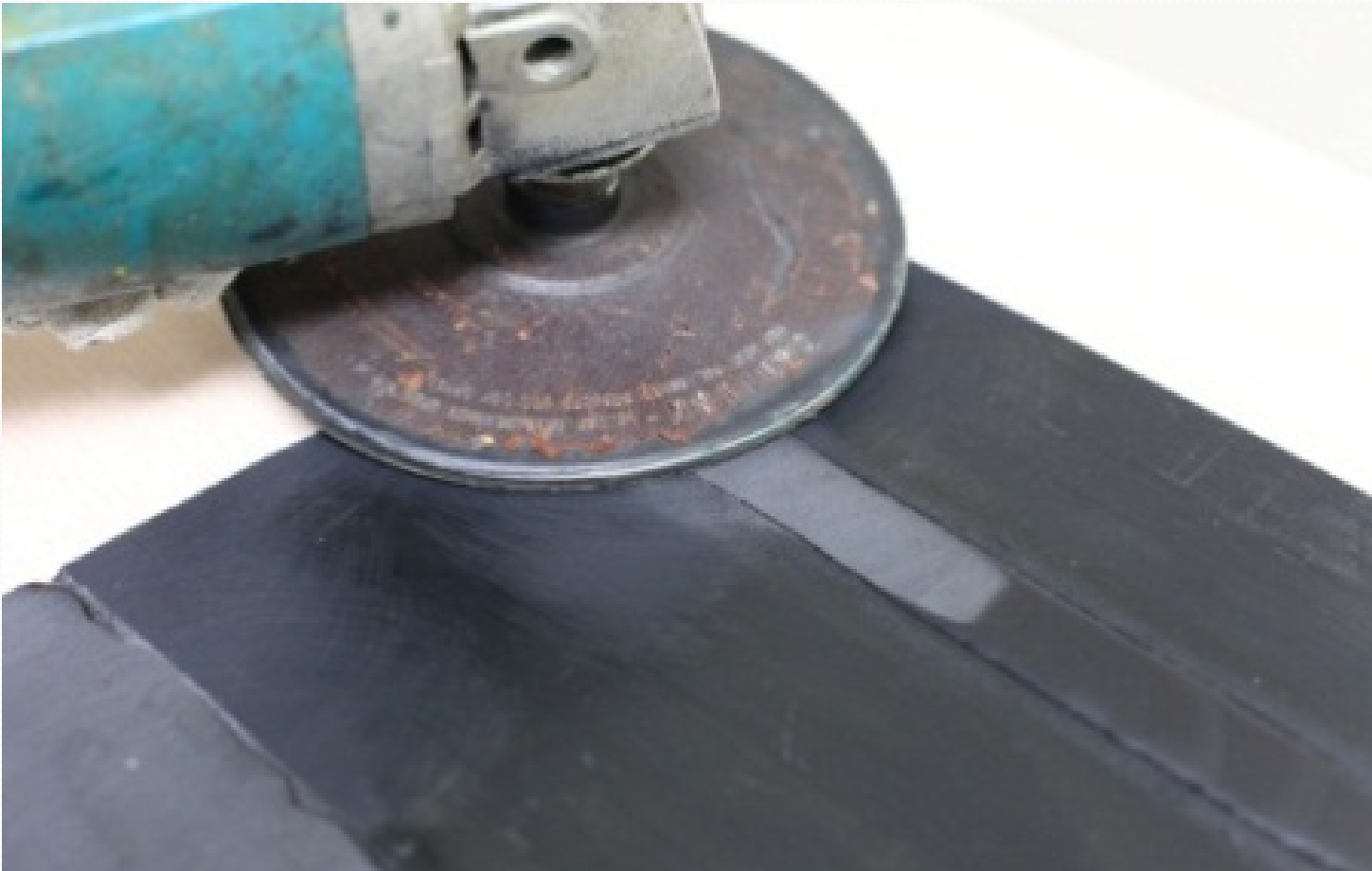
Apply the repair material.



Level with Spatula if needed.



Buff repair area after 30 minutes.





# Normac U-Repair

## Conveyor Belt Repair

Normac Adhesive Products Inc.  
1350 Heine Court, Burlington, ON  
Canada L7L 6M4  
(905) 332-6455 Fax (905) 332-6880

[www.normacadhesives.com](http://www.normacadhesives.com)